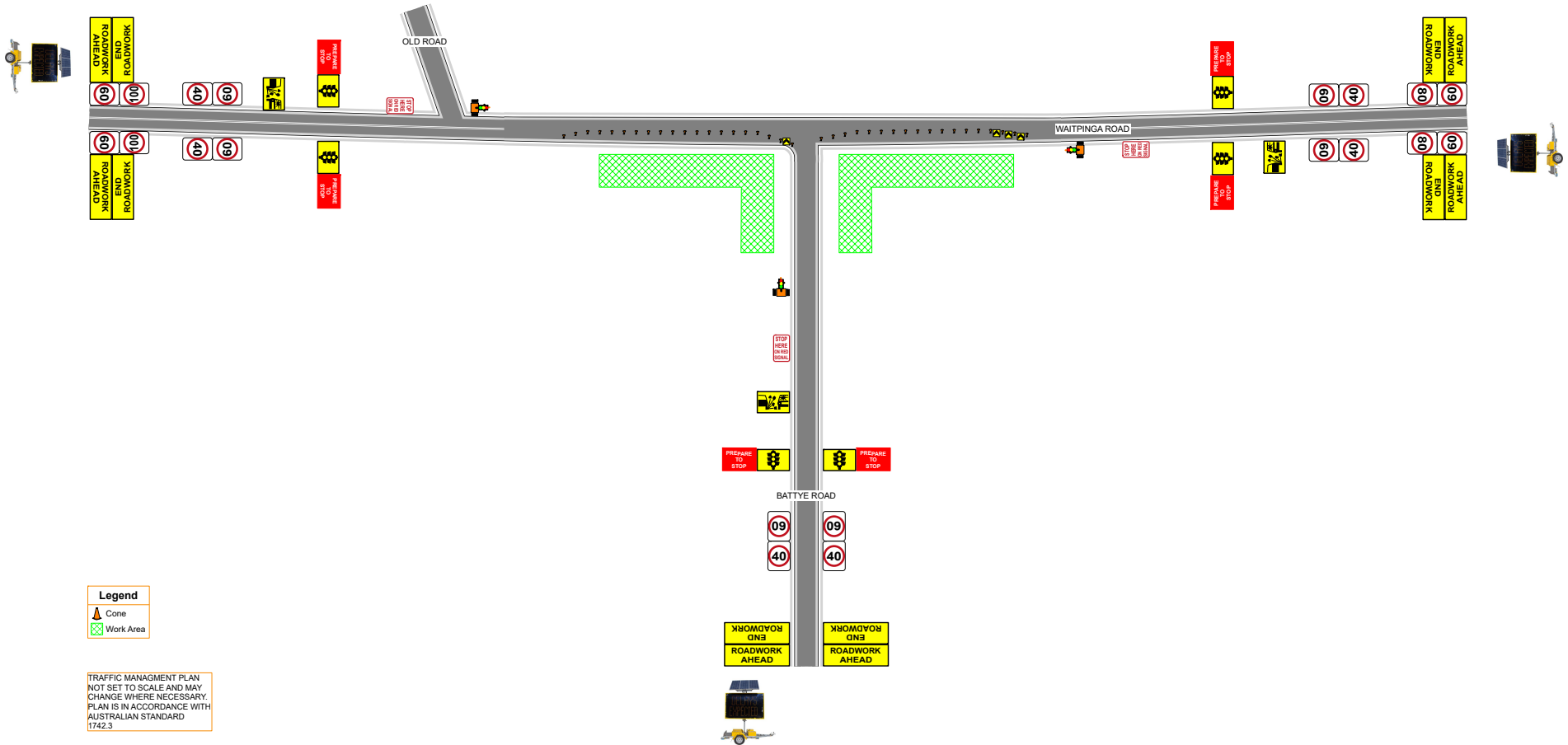
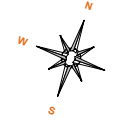




DATE: 19/08/2019 AUTHOR: JAMES FRANCIS THE TRAFFIC GUYS PTY LTD 0411050015
COMMENTS: TRAFFIC MANAGEMENT PLAN FOR WAITPINGA ROAD, WAITPINGA FOR BUTTROSE EARTHMOVERS.
ALL SIGNAGE MUST BE SETUP IN ACCORDANCE WITH AS1742.3



Legend

- Cone
- Work Area

TRAFFIC MANAGEMENT PLAN
NOT SET TO SCALE AND MAY
CHANGE WHERE NECESSARY.
PLAN IS IN ACCORDANCE WITH
AUSTRALIAN STANDARD
1742.3